

SUCCESS STORY

www.gerber-maschinen.ch

Deburring production parts: Brush deburring of stamped and fineblanking components

The René Gerber Company, CH-Lyss has developed a new compact brush polishing machine BS Eco. The planetary brush head plant for de-burring and edge honing solid burrs on parts measuring up to a nominal maximum diameter of 250 mm is an efficient and precise brushing and polishing system for cost-effective machining.

Introductory remarks

The Gerber brushing, polishing and deburring machines are used when it is necessary to deburr workpieces with indentations or pockets with high precision and to round them off in a defined narrow tolerance range. At the same time, the surface roughness is quite significantly improved by the process. This technology is incorporated in a large number of precision components where absolute absence of burrs and an undamaged surface are a must. Our customers are to be found in metalworking particularly in the manufacturing of stamped and fine blanking components, flat turned and milled parts, sintered parts, laser cut and water-jet cut components and indexable inserts.

New development

The planetary brush heads were developed by Gerber and each have three disc brushes with a diameter of 150 mm, forming a rotational circle of 320 mm. The machine is universally applicable. It can be used to deburr very

fine sheets of metal with a thickness from approx. 0.1 mm. Higher parts such as rotors, planetary gears and housings etc. can be reliably deburred with this technology. The BS-machine line has a very versatile design, so that heavily burrs resulting from punching, laser cutting, milling or turning are rapidly and reliably removed.

Significant performance

The performance data of the BS Eco are impressive. The machine bed offers maximum stiffness and thus process reliability. The drive motors are protected from the operating area and with 2.2 kW, each deliver the power to drive the brushes with a speed of up to 1,500 rpm. The entire machine concept is based on a modular investment and can thus be specifically put together for the customer. This means that there are intelligent solutions for the flushing and draining device, the planetary brush head system, automatic feeding and brush measurement, to name just a few.

THE RENÉ GERBER AG

Mechanical engineering

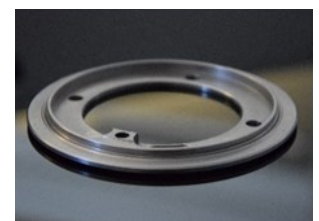
RENÉ GERBER AG was founded in 1955 and initially successfully manufactured honing and polishing machines for the Swiss watch jewel and sapphire crystal industry. The engineers at René Gerber AG have meanwhile consistently advanced developments in the machining of hard and ultra-hard materials.

Today, Gerber is one of the leading suppliers of edge honing and polishing machines for carbide inserts.

With service centres and agencies in 17 countries, with which we maintain close cooperation, we seek close proximity to our customers so that we can continuously respond to their needs.

René Gerber AG

Werkstrasse 35
 3250 Lyss / Switzerland
 Phone +41 32 387 88 00
www.gerber-maschinen.ch
info@gerber-maschinen.ch



Compact. Economical.

The BS Eco brush polishing machine - as small as possible, as large as necessary

If precise deburring, edge honing and surface polishing are integrated into one process on a phenomenal 2.1 m², then Swiss technology is at work here. The goal is focussed on making this installation as economical as possible on the smallest amount of space.

As the technology leader in the process development and construction of brush deburring, edge honing and polishing machines, the René Gerber Company has been providing solutions for the user for over 60 years.

Compact machines with great benefits, a product from the René Gerber Company

The BS Eco brush polishing machine is compact, reliable and optimally combines three work steps into one process. In addition it is:

- efficient and cost-effective
- easy to handle
- three processes in one
- optimal cost-benefit ratio



BS Eco optimally combines deburring, edge honing and surface polishing—three processes in one plant

The BS Eco is a planetary brush head plant for de-burring and edge honing solid burrs on parts measuring up to a nominal maximum diameter of 250 mm, and is an efficient and precise brushing and polishing system for cost-effective one-sided machining. The machine is particularly suitable for precision components, such as stamping and fineblanking parts, flat turned and milled parts, sintered parts, laser and water jet cut parts as well as the precise radiusing of indexable inserts where there is a requirement for high surface quality and parts free of all burrs.



Swiss precision in deburring, honing and polishing.

That is Gerber.

That is the new **BS Eco**.

